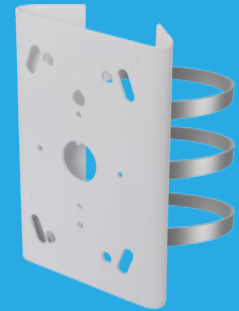


# SN-BK342A

## Pole Mount Bracket



### Specification

Parameter	
Application Model	SN-BK337A
Material	Steel (Cold Rolled Sheet), Stainless steel
Color	White
Load Bearing	8 kg (17.6 lb)
Product Dimensions	127 × 42 × 197mm

### Dimensions (mm)

